

FOR SALE

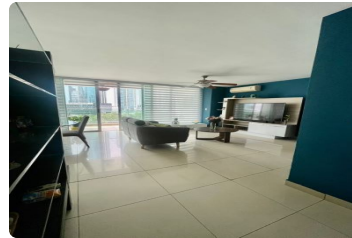
\$ 275,000.00 USD

Panama - Panamá

Panama - Costa del Este

Listing ID: 003033098161

Located on the 9th floor of Tower 1000, this elegant Type C residence offers a well-designed layout and generous living spaces, perfect for comfortable family living. Property Features: 155 m² (1,668 sq. ft.) of living space 3 spacious bedrooms 2.5 bathrooms Open-concept living and dining area Family den Private balcony Functional kitchen Laundry area Maid's quarters with private bathroom 2 parking spaces (E4) 1 storage unit (E4) PH Sevilla offers an ideal combination of comfort, space, and convenience in one of Panama City's most desirable residential areas, with easy access to shopping centers, restaurants, supermarkets, schools, and major roadways. Contact us today for more information or to schedule a private showing.



[SEE THIS PROPERTY ON THE MAP](#)



ROCIO MOLINA
SALES AGENT
507 69817859
rocio@remax-infinitypa.com
www.remax-infinitypa.com



RE/MAX INFINITY

C. 69 Este, Panamá, Provincia de Panamá, Panamá

Each office is independently owned and operated