

## FOR LEASE

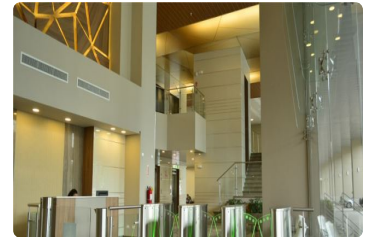
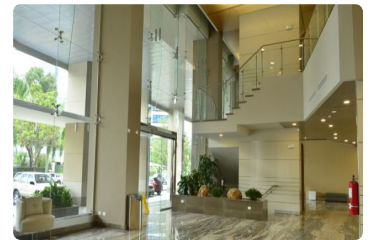
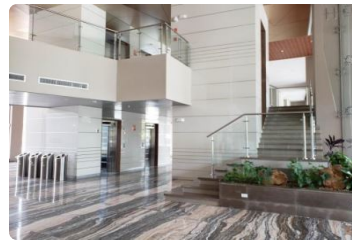
**\$ 2,860.00 USD**

Panama - Panamá

Panama - Costa del Este

Listing ID: 003033097160

Plaza del Este stands as the most advanced and sustainable office complex in the area, designed specifically for corporations seeking efficiency, security, and a world-class working environment. Join an exclusive business community that hosts global leaders such as Grupo Corporativo Perez, Lexus, Estee Lauder, Liberty Latin America, Papelera Istmeña, Hisense, Dichter & Neira, and Nestlé. Availability and Pricing: We offer modular spaces tailored to your organization's growth: Offices starting at 130 m<sup>2</sup>: Rent starting at \$2,860.00 per month. Full floors up to 795 m<sup>2</sup>: Rent starting at \$17,490.00 per month. Infrastructure and Sustainability (LEED Certified): The complex is designed under rigorous energy efficiency and comfort standards: Double-paned polarized windows: These optimize natural light, enhance acoustics, and significantly reduce climate control...



[SEE THIS PROPERTY ON THE MAP](#)



**ALEX FUENTES**

**SALES AGENT**

507 62684667

[alex@remax-infinitypa.com](mailto:alex@remax-infinitypa.com)

[www.remax-infinitypa.com](http://www.remax-infinitypa.com)



RE/MAX INFINITY

C. 69 Este, Panamá, Provincia de Panamá, Panamá

Each office is independently owned and operated