

FOR SALE

\$ 915,400.00 USD

Panama - Panamá

Panama - Punta Paitilla

Listing ID: 003033027034

We will show you why our apartments are the best option for you. Starting with the large windows in the living room, where the light and the sea are the protagonists, the European-style kitchen and the incredible rest areas. Then, the spacious rooms, all with dressing rooms and their own bathroom, full of imported details. Living rooms and dining rooms with floor-to-ceiling windows European Kitchens Spacious rooms all with their own bathroom and walk in closet The elegant tower is another vision brought to reality by Edwin Brown Interiors inspired by the sinuous waves of the sea under the signature of Mallol Arquitectos Lobby with floor-to-ceiling windows where you can see the panoramic view of the sea Modern meeting rooms Smart building with fiber optics 3 high-speed elevators (with modulesabbatical) service elevator Visitor parking Elegant double height garage door Surveillance Cameras...

APARTMENTS

A. 420 m2

	4
	4.5
	1

B. 320 m2

	3
	3.5
	1

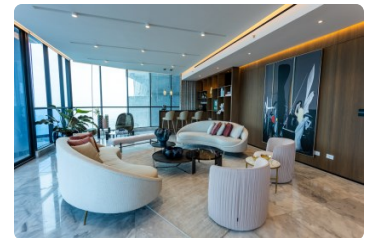
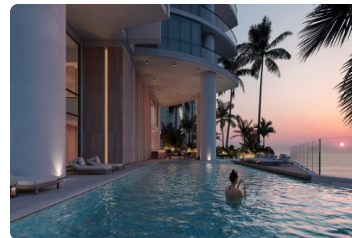
PENTHOUSES

565 m2

	5
	5.5
	1

610 m2

	5
	5.5
	1



[SEE THIS PROPERTY ON THE MAP](#)



GABRIELA GUTIERREZ
 SALES AGENT
 507 69296902
gabriela@remax-infinitypa.com
www.remax-infinitypa.com



RE/MAX INFINITY

C. 69 Este, Panamá, Provincia de Panamá, Panamá

Each office is independently owned and operated