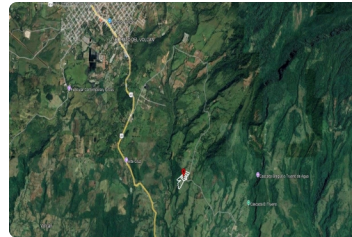


FOR SALE

\$ 99,999.00 USD

Panama - Chiriquí
Boqueron - Cordillera
Listing ID: 002762479122

Discover a unique opportunity in the highlands of Cordillera Arriba, Boquerón – Chiriquí, where nature, comfort, and privacy meet. These residential country lots, currently in the process of segregation, range from 7,340 m² to 3 hectares (1.8 to 7.5 acres) and sit at an elevation of approximately 1,300 meters (4,265 ft) above sea level—offering a cool year-round climate and unmatched views. Lot 1 = 7,340m² (1.81 ac) \$102,800.00 Lot 2 = 8,118m² (2.00 ac) \$113,700.00 Lot 3 = 7,898m² (1.95 ac) \$110,600.00 Lot 4 = 7,700m² (1.90 ac) \$99,999.00 Lot 5 = 8,476m² (2.09 ac) \$118,700.00 Lot 6 = 30,367m² (7.5 ac) \$364,500.00 Pending Located just 9 kilometers (~5.6 miles) or 15 minutes from downtown Volcán, the property is accessed via paved asphalt road and offers excellent connectivity while preserving a tranquil, off-grid feel. From every lot, you'll enjoy panor...



[SEE THIS PROPERTY ON THE MAP](#)



HARRY ALVARADO
SALES AGENT
507 64860816
harry.alvarado@remax-highlands.net
www.remax-highlands.net



RE/MAX HIGHLANDS
Chiriqui Montaña, Chiriquí, Panama

Each office is independently owned and operated