

LOFT-STYLE STUDIO APARTMENT IN SAN FRANCISCO, DECORATED TO YOUR T... - Listing ID:  
002574475022

**FOR SALE**

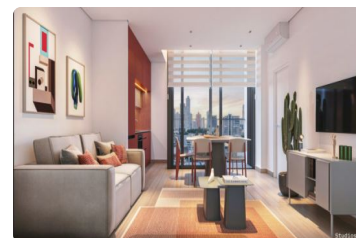
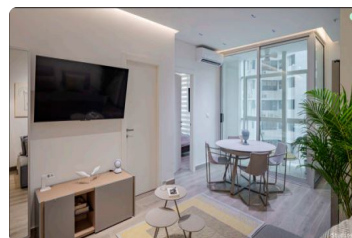
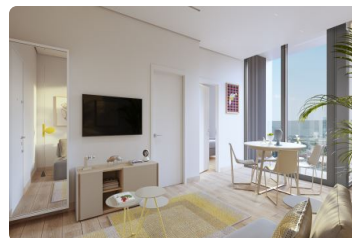
**\$ 169,000.00 USD**

Panama - Panamá

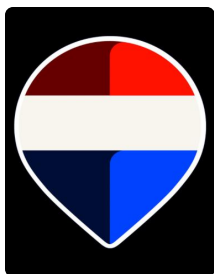
Panama - San Francisco

Listing ID: 002574475022

GESTI 68 Calle 68 San Francisco - San Francisco Pedestrian Mall Located on Calle 68 in San Francisco, a point where the city meets some of Panama's most iconic restaurants, this residential project offers a practical and well-connected lifestyle. Its location allows for easy movement between Calle 50 and Via Porras, keeping you close to everything you need. Gesti68 is a 16-story tower, designed exclusively with studio apartments, optimizing every square meter to ensure comfort. Its efficient layout and communal spaces create a welcoming atmosphere. Furthermore, the project guarantees one private parking space per apartment, a rare feature in new projects of this type. Apartment Sizes Models C, D, G, H: 48m<sup>2</sup> starting at \$169,000 Models A, B, and E: 52m<sup>2</sup> starting at \$183,000 Models E, F: 54m<sup>2</sup> - Sold Out Building Description 16 floors 10 residential floors 80 ap...



[SEE THIS PROPERTY ON THE MAP](#)



DAISY BATISTA

SALES AGENT

507 69620480

[daisy@remax-destiny-panama.com](mailto:daisy@remax-destiny-panama.com)

<https://remax-destiny-panama.com/>



RE/MAX DESTINY

Via España, Panamá, Provincia de Panamá, Panamá

Each office is independently owned and operated