

## FOR LEASE

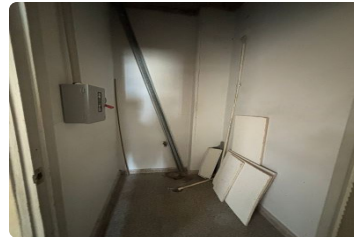
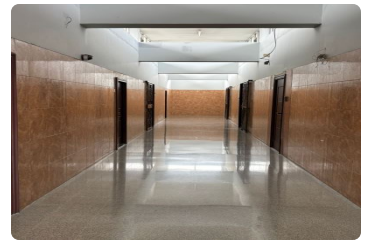
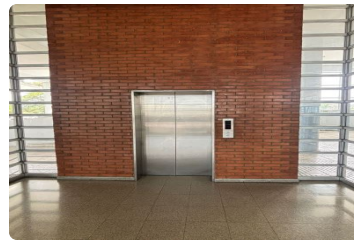
**\$ 750.00 USD**

Panama - Panamá

Panama - Betania

Listing ID: 002574119250

COMMERCIAL PREMISES FOR RENT – PLAZA EDISON, CIUDAD SIGLO XXI HOUSING COMPLEX Commercial premises designated as 55PA are available for rent, strategically located in the Ciudad Siglo XXI housing complex, in the Plaza Edison area. Thanks to its layout and location, this property is ideal for administrative offices or professional services requiring a functional, corporate environment. Property Details: Area: 57.25 m<sup>2</sup> Level: Upper Floor (access via stairs and lift). Layout: 3 private offices with partitions, a meeting room and 1 toilet. Parking: Spaces available in front of the premises for the convenience of clients and staff. Lease Terms: Monthly rent: B/. 750.00 Availability: From 28 February 2026. This unit stands out for its excellent location within one of the city's most central commercial and business districts, ensuring accessibility and a professional image for your compan...



[SEE THIS PROPERTY ON THE MAP](#)



GISSEL SARMENTO

SALES AGENT

507 68492586

[gissel@remax-destiny-panama.com](mailto:gissel@remax-destiny-panama.com)

<https://remax-destiny-panama.com/>



RE/MAX DESTINY

Via España, Panamá, Provincia de Panamá, Panamá

Each office is independently owned and operated