

FOR LEASE

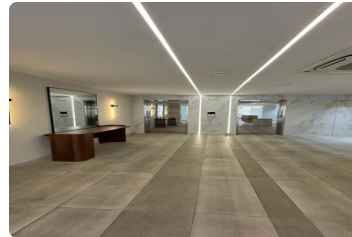
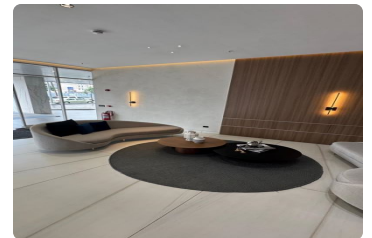
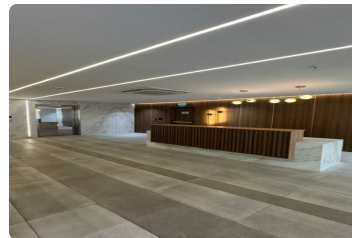
\$ 1,100.00 USD

Panama - Panamá

Panama - Pueblo Nuevo

Listing ID: 002394623003

LOCATION: Vía España Situated on one of the city's main thoroughfares with access to key routes; steps away from the metro station and directly across from public transport. Located in a hub for medical, commercial, and residential activity. **PROPERTY FEATURES:** Brand-new Ready-to-occupy, premium medical office. 35 m² Air conditioning 2 individual consultation rooms 1 private bathroom Reception and waiting area Office area Covered parking **AMENITIES:** Lobby 24/7 security Spacious waiting area Reception 2 elevators Visitor parking area Commercial arcade with shops and a pharmacy 3 levels of modern medical offices **PROJECT HIGHLIGHTS:** Prime location near Clínica Hospital San Fernando, Consultorios San Fernando, and other specialized medical centers. "Lease a space that offers your patients an unparalleled healthcare experience". **ARIEL BEDOYA – AGENT - RE/MAX LIFE PANAMA – PJ-1361-2021 Contact: +507 6747-2455 | ariel.bedoya@re...**



[SEE THIS PROPERTY ON THE MAP](#)



ARIEL BEDOYA

SALES AGENT

507 67472544

ariel.bedoya@remax-life.com.pa

<http://www.remax-life.com.pa>



RE/MAX LIFE

Oceanía Business Plaza, torre 1000, C. Isaac Hanono Míssri, Panamá, Provincia de Panamá, Panamá

Each office is independently owned and operated