

## FOR LEASE

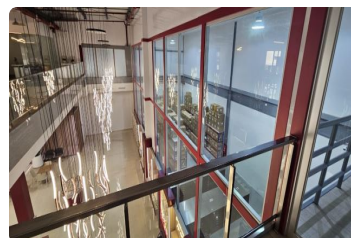
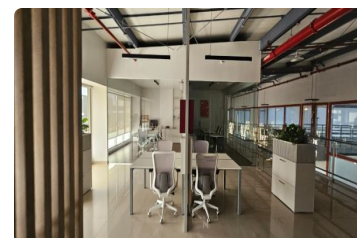
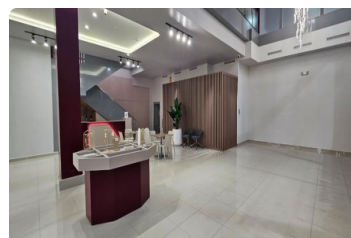
**\$ 16,000.00 USD**

Panama - Panamá

Panama - Juan Diaz

Listing ID: 002393032050

Flagship-level commercial and industrial space, fully turnkey. Combines a double-height showroom with premium finishes, an administrative office mezzanine, and a high-capacity storage area — all on one of the highest-visibility corners of the Nevada building. Location: Don Bosco industrial zone (Zone 1). High-exposure façade, direct loading and unloading access, surrounded by established logistics and commercial operations. Layout Ground floor (Level 000) — 1,203.57 m<sup>2</sup>: double-height sales floor / showroom, checkout area, clear-height main storage, in-warehouse office, dining room (24.18 m<sup>2</sup>), service restrooms, and electrical room. Designer lighting and high-end finishes already installed. Mezzanine (Level 100) — 795.07 m<sup>2</sup>: upper storage of 572.02 m<sup>2</sup>, finished administrative offices (175.71 m<sup>2</sup>), office dining room (13.88 m<sup>2</sup>), restrooms (4.99 m<sup>2</sup>...



[SEE THIS PROPERTY ON THE MAP](#)



**PEDRO ALVARADO**

SALES AGENT

507 67044571

[pedro.alvarado@remax-life.com.pa](mailto:pedro.alvarado@remax-life.com.pa)

<http://www.remax-life.com.pa>



RE/MAX LIFE

Oceanía Business Plaza, torre 1000, C. Isaac Hanono Mssri, Panamá, Provincia de Panamá, Panamá

Each office is independently owned and operated